

Ultra-reliable MECHANICAL TENSION METERS

DX2 Series

10 ranges, 5–50 g to 5–20 Kg

A precise jeweled movement, choice of ball bearing mounted rollers and rugged cast aluminum housing makes the DX2 ideal for the toughest production floor application.

Built-in mounting holes permit fixed installation for continuous in-line use.



FEATURES

- Thumb-operated, roller-shifting mechanism and exclusive snare-guide automatically guides the moving filament into the V-grooves eliminating breaks and snags.
- Front filament loading permits the operator to observe running material, rollers and dial face at all times.
- DX2's are individually calibrated for highest accuracy.
- DX2's hard-coated aluminum, V-grooved rollers are rated for speeds up to 2000 m/min or, optionally, up to 5000 m/min.
- Built-in material thickness compensator maximizes accuracy when using filaments of different diameters.*
- NIST calibration available.



Model DXL-5K with 250 mm spacing between outer rollers.

Model Prefix	DX2										DXX	
Range Code	5	12	20	40	SP	EX	200	500	1K	2K	3K	5K
Tensions (g)	5–50	10–120	10–200	10–400	20–1000	100–1000	200–2000	400–5000	2–10 Kg	5–20 Kg	5–30 Kg	5–50 Kg

Complete model number includes: DX2 plus range code, e.g., DX2-200.

* Supplied on DX2-SP models and higher ranges.

DX2 Series

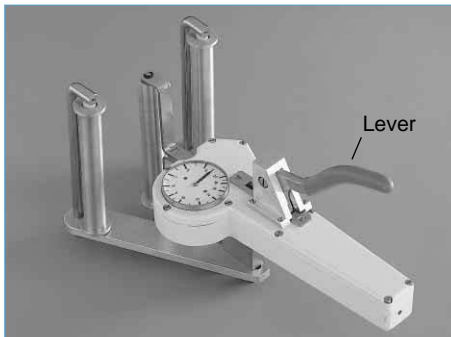
Options

Air Damping (A)



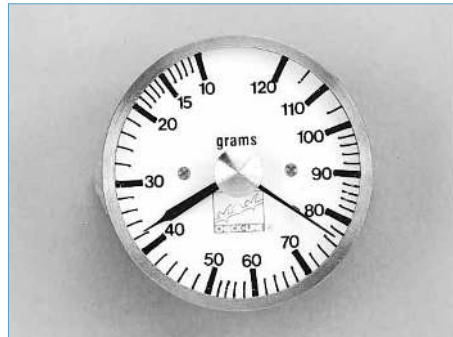
An adjustable, precision air dashpot provides steady tension readings as tensions fluctuate.

Lever (L)



A heavy-duty, lever-operated mechanism moves the outer rollers for easy acquisition of the running filament. Recommended for models of 10 Kg or higher.

Memory Pointer (M)



Designed to retain the peak tension value as tensions fluctuate. Manually reset by using the knob located in the center of the dial.

High Speed Bearings (K)



Rated for speeds up to 3500 m/min.

Ultra High Speed Roller Assembly (HS)



Rated for speeds up to 5000 m/min.

Model Data & Specifications

Accuracy*	±1% of full scale or ±1 graduation mark on scale	Roller Material (standard)	Hard-coated aluminum
Diameter of Scale	41 mm	" " (optional)	Hardened steel (ST) Chromed Steel (W) Ceramic (CE) Plastic (PL)
Maximum Speed (standard)	2000 m/min	Housing material	Die-cast aluminum
" " (optional)	3500 m/min (K)	Dimensions	225 x 90 x 44 mm (8.6" x 3.5" x 1.7")
" " "	5000 m/min (HS)	Weight	500 g (1.1 lbs.), approx.
Outer roller distance, c:c			
DX2-5 to DX2-EX	38 mm		
DX2-200 to DX2-1K	100 mm		
DX2-2K	150 mm		
DXX-3K to DXX-5K	250 mm		

* Using factory material standards and procedures. Special calibration using customer sample is available.

Specifications subject to change without notice.

ELECTROMATIC

EQUIPMENT CO., INC.

600 Oakland Ave., Cedarhurst, NY 11516-U.S.A.
TEL 516-295-4300 • FAX 516-295-4399

CHECK•LINE is a registered trademark of ELECTROMATIC Equipment Company Inc.

For additional information
or to place an order
CALL TOLL FREE
1-800-645-4330

Printed in U.S.A.